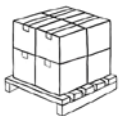




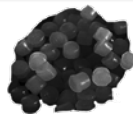
## COMMODITIES HANDLED



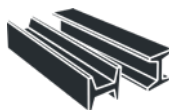
LUMBER



PALLETIZED



PLASTICS



STEEL

## SERVICES

- Transloading to and from truck, rail
- New warehouse storage capacity

## TERMINAL SPECIFICS

- 25 total acres
- 32 railcar spots
- 50,000 sq ft warehouse
- 5 acres outdoor storage

## MAJOR FEATURES

- 8,000 – 36,000 lb forklifts
- Rigging equipment
- Truck drayage services available
- Newly renovated 50,000 sq ft warehouse

## WHY WATCO

This site's strengths are further magnified by our strong Watco network with 87 terminals, 38 short line railroads, 31 industrial contract switching locations, 31 railcar repair shops, and our own internal logistics support group that actively works to support our Customers' full supply chain needs. Let us be your one stop for all your supply chain solutions from origin to destination; leveraging a vast rail, road, river, ocean, and air network to provide Customers with the best value in service from START to FINISH.



Recently renovated warehouse with immediate available storage space. Great for commodities like building materials, palletized goods, and dry products.

### CONNECTIONS

#### RAIL

Direct rail service:  
**Illinois Railway**  
 Class I Connections: UP, CN, CP, BNSF

#### ROAD

Interstates 39 & 80

### CONTACT US

**Address:** 1501 Baxter Rd.  
 Rockford, IL 61109

**Phone:** 815-874-6820

### COMMERCIAL

**Jamaar Benton - Commercial Manager**  
 608-235-9066  
[jamaar.benton@watcocompanies.com](mailto:jamaar.benton@watcocompanies.com)

### OPERATIONS

**Bob Cunningham-Terminal Manager**  
 815-703-0834  
[bcunningham@watcocompanies.com](mailto:bcunningham@watcocompanies.com)